



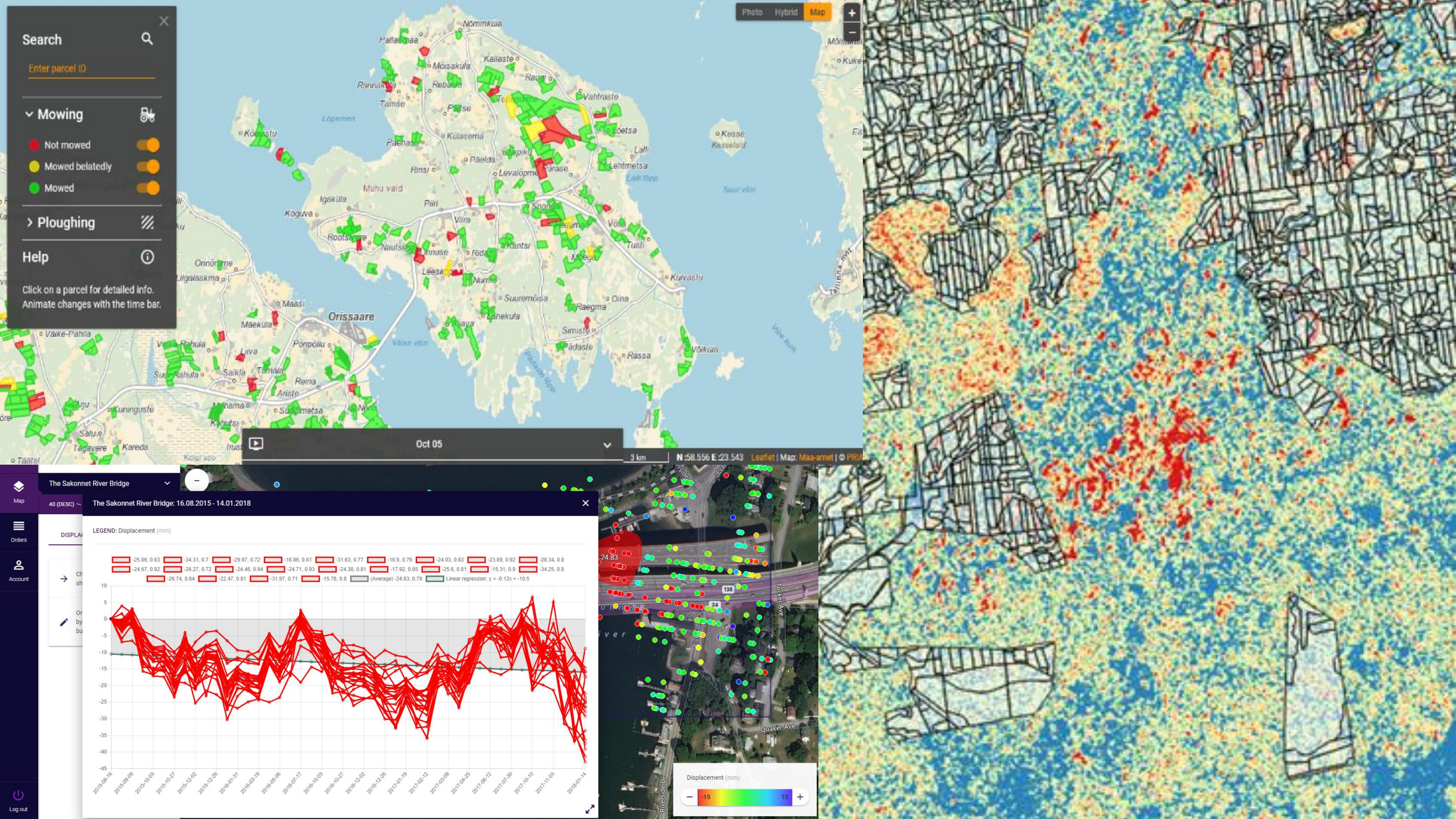
REPUBLIC OF ESTONIA
MINISTRY OF ECONOMIC AFFAIRS
AND COMMUNICATIONS

Land monitoring with Copernicus in Estonia

Paul Liias

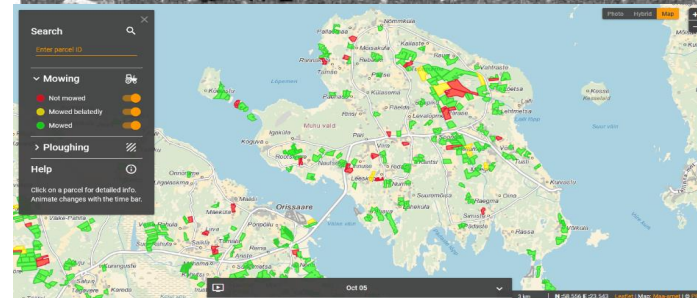
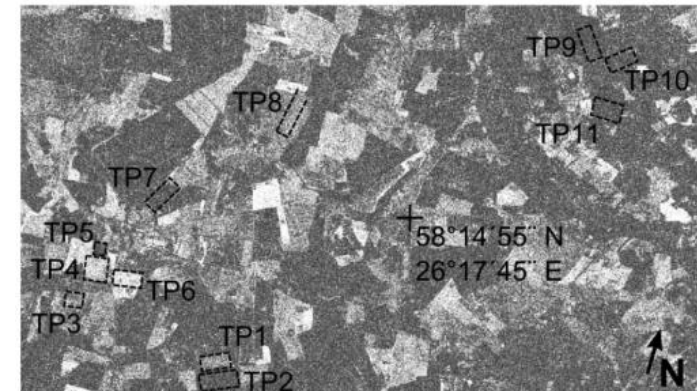
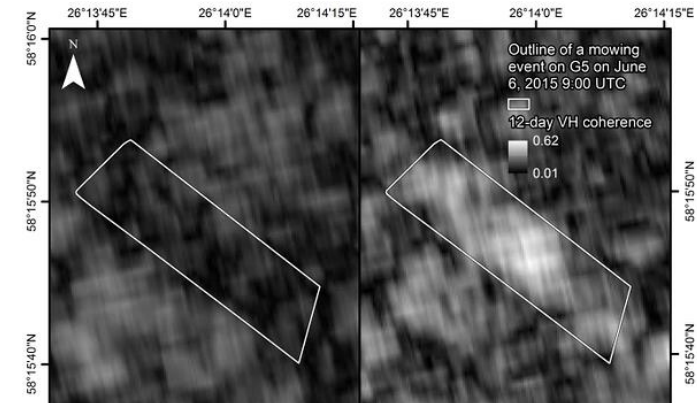
Expert in Space Technologies and Policy

Paul.Liias@mkm.ee



1. Agricultural Monitor – satellite based subsidies verification

- Parcel level checks
- Based on Sentinel-1 and -2 time series
- Country wide and whole vegetative season coverage
- Starting from mowing requirement check
- www.kappazeta.ee



Search



Enter parcel ID

Mowing



Not mowed



Mowed belatedly



Mowed



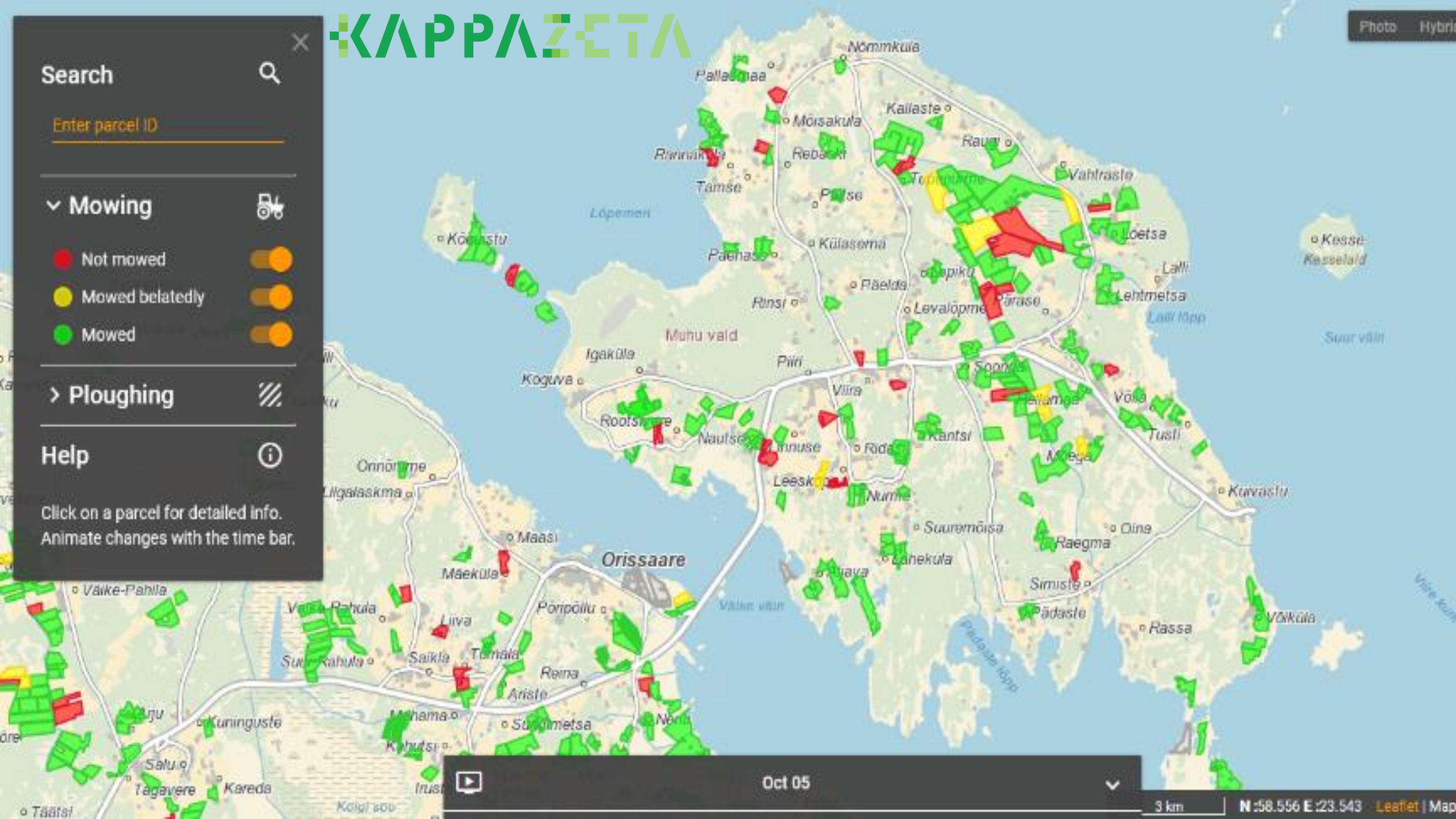
Ploughing



Help



Click on a parcel for detailed info.
Animate changes with the time bar.



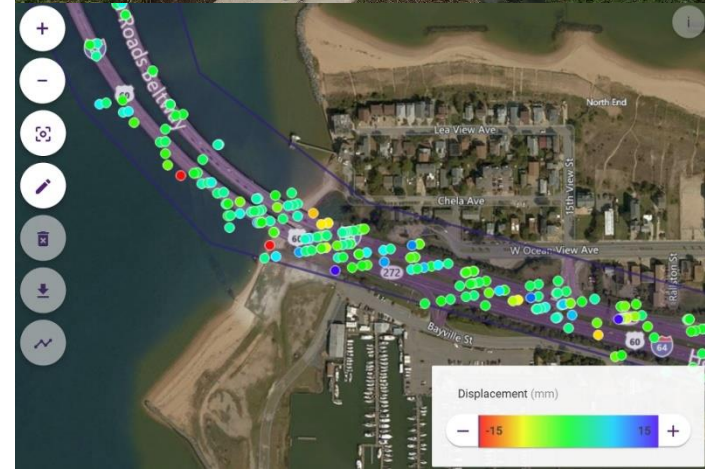
Oct 05

3 km

N:58.556 E:23.543 Leaflet | Map

Early warning system - Sille

- An early warning system for land and infrastructure
- Early discovery of unwanted changes in facilities
- Based on Sentinel radar data
- Regularly updated object displacement trend data
- Constantly evolving service – new ways in the interpretation of data, implementation of new features
- sille.datel.ee





SILLE
BETA

In English



Map



Orders



Account



Log out

The Sakonnet River Bridge

40 (DESC)

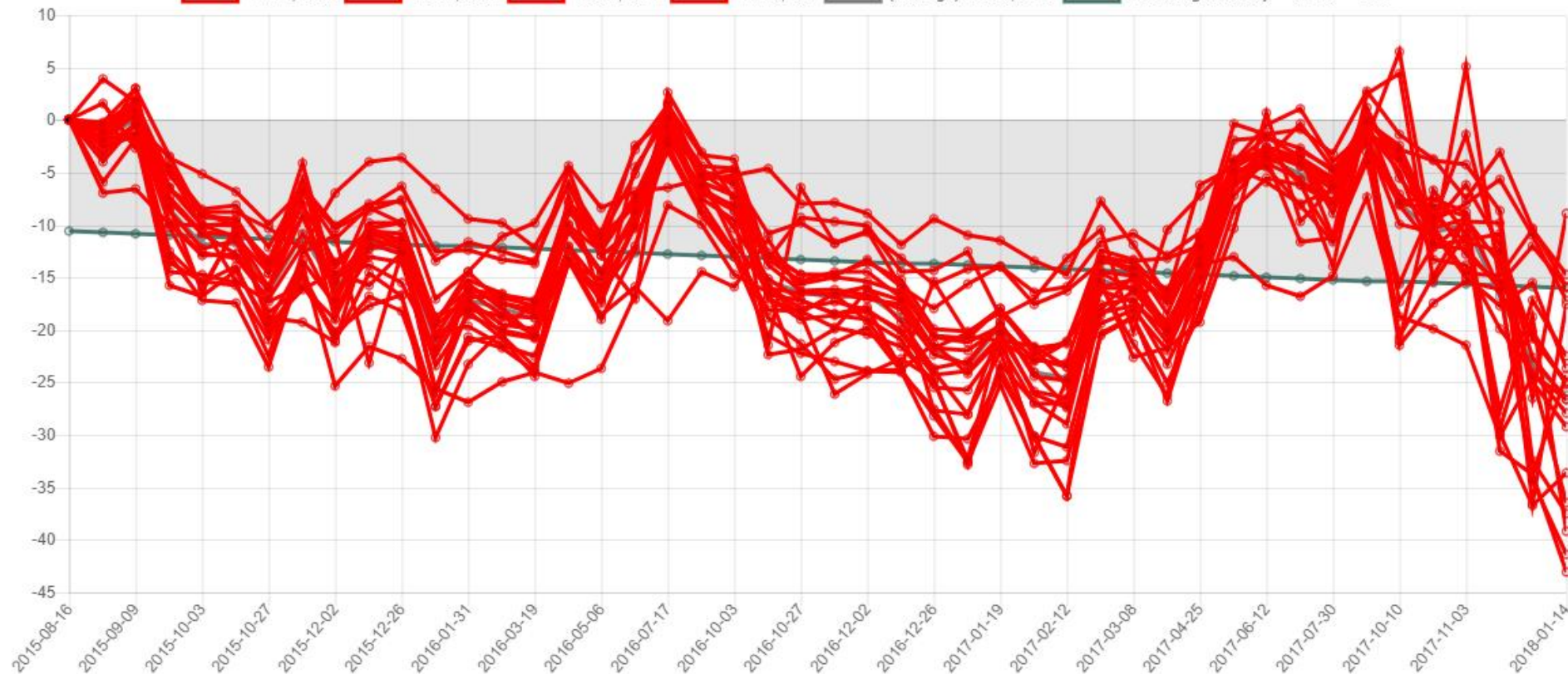
The Sakonnet River Bridge: 16.08.2015 - 14.01.2018



DISPLA

LEGEND: Displacement (mm)

-25.86, 0.63 -34.31, 0.7 -29.97, 0.72 -16.86, 0.61 -31.63, 0.77 -16.9, 0.79 -24.03, 0.83 -23.89, 0.92 -28.34, 0.8
-24.67, 0.92 -26.27, 0.72 -24.46, 0.94 -24.71, 0.93 -24.38, 0.81 -17.92, 0.65 -25.6, 0.81 -15.31, 0.9 -34.25, 0.8
-26.74, 0.84 -22.47, 0.81 -31.97, 0.71 -15.78, 0.8 (Average) -24.83, 0.79 Linear regression: $y = -0.12x + -10.5$



Forest monitoring

Reach  U





REPUBLIC OF ESTONIA
MINISTRY OF ECONOMIC AFFAIRS
AND COMMUNICATIONS

Thank you!

Paul Liias

paul.liias@mkkm.ee