

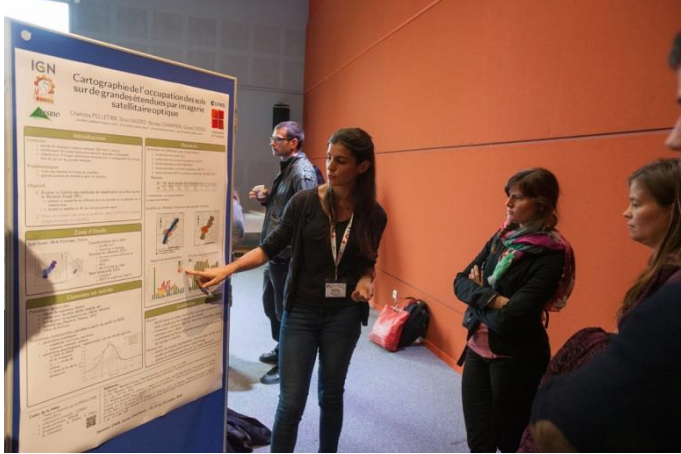


CNES Space Applications Development

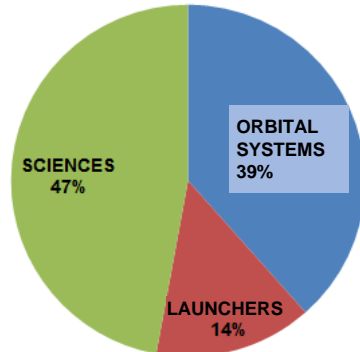
Research opportunities

TAIEX Workshop, Bangkok, Sept. 2018

Dr. Linda TOMASINI



Poster session at the 2016 JC² - © CNES/P.JALBY



Breakdown of themes

Doctoral and post-doctoral students

Strong support for young researchers through joint funding of over 100 research grants every year

- ❖ Helping with the preparation of theses on space-related issues in French research laboratories
- ❖ Promoting the inclusion in research organisations of young researchers involved in space issues
- ❖ Encouraging exchanges between young researchers, industry and laboratories
- ❖ Strengthening the links between young researchers and CNES: organisation of open days (JC²) and presentation of work



Franco-Thai Cooperation : Funding and Fellowship Opportunities



Dr Guillaume DA

French Embassy in Thailand

guillaume.da@diplomatie.gouv.fr



Our missions

- Promote higher education and scientific cooperation between France and Thailand.
- Provide incentives for high quality academic and scientific exchanges.
- Develop long term partnership between Thai and French research organizations and universities.



Our tools

- Campus France
- Franco-Thai Scholarship Program
- Junior Research Fellowship Program
- Franco-Thai Joint Research Program (PHC Siam)





Franco-Thai Scholarship Program

- Open call.
- Online Application.
- Studies in France at Master or PhD level.
- Co-funding with academic and research institutions as well as with the private sector.
- Deadline: February 19th, 2019





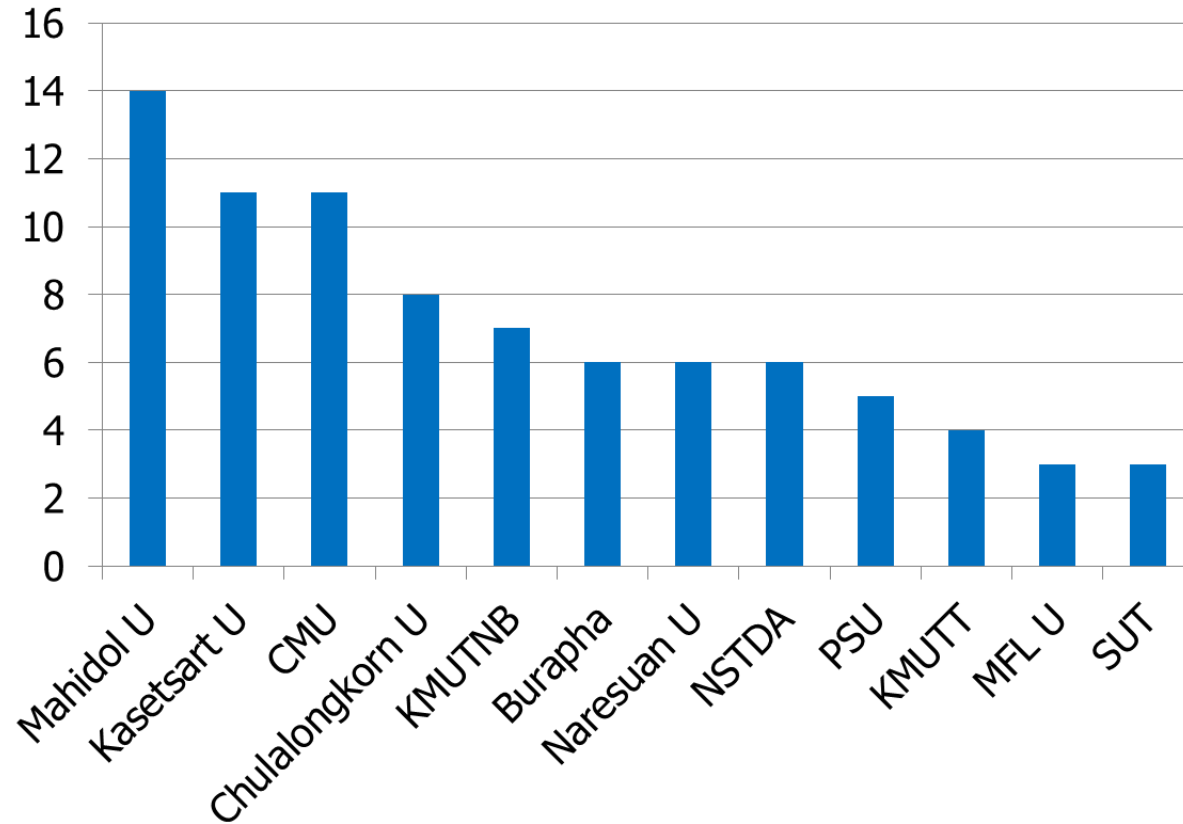
Junior Research Fellowship Program

- Program started in 2011
- Open call
- Opportunity for promising young researchers to spend 2 to 6 months in a French research laboratory
- Building new sustainable partnerships
- Ca. 10 candidates selected out of 30-50 applications





Junior Research Fellowship Program





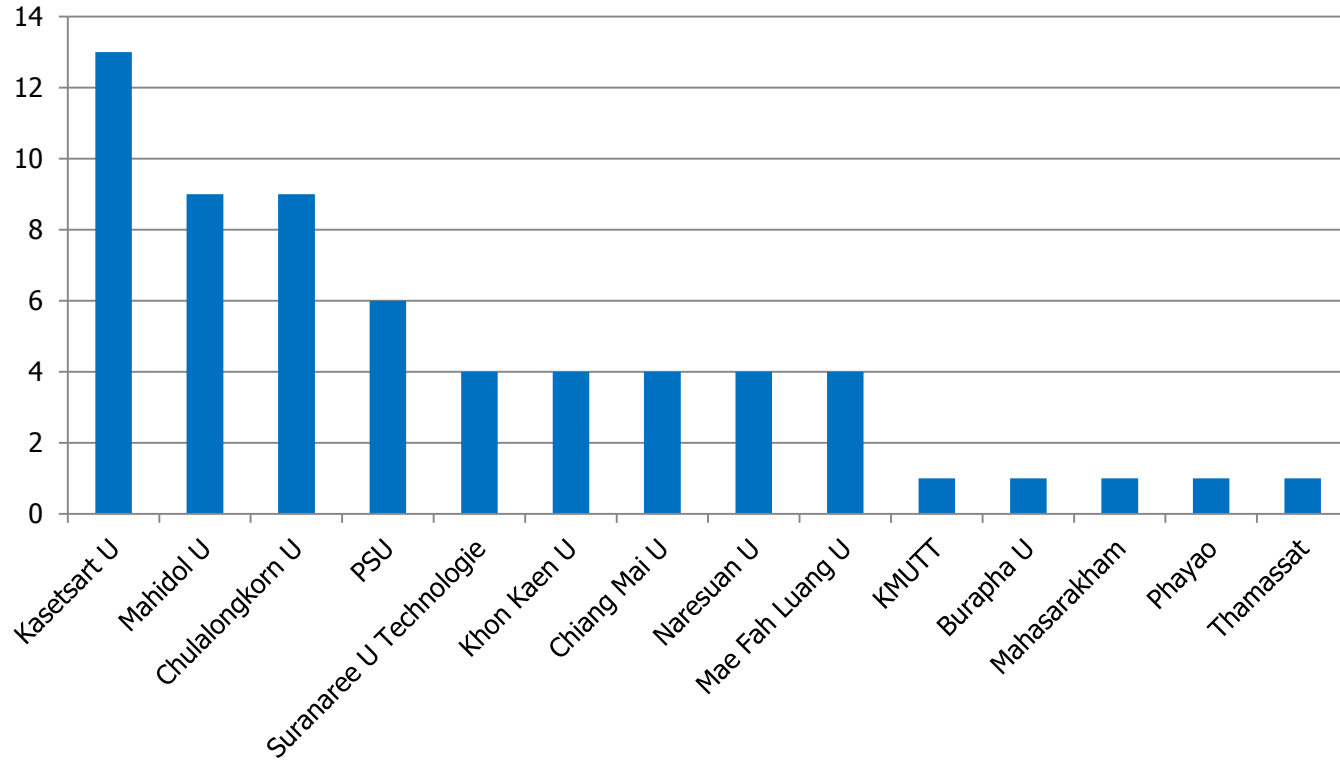
Franco-Thai Joint Research Program (PHC Siam)

- Support high-level scientific cooperation between France and Thailand
- Call for proposal every year
- Joint Steering Committee
- Criteria include : quality of the project, involvement of young researchers, complementarity between both sides, long term benefits...





Franco-Thai Joint Research Program (PHC Siam)





Reinforcement of the partnerships

- International research networks, international associated laboratory, joint international research units and degrees, MoUs, French research institute abroad...



Institut Pasteur

- EU-ASEAN – H2020 & FP7



- Student mobility through scholarships

French Embassy, Erasmus Mundus, Eiffel Program, Royal Golden Jubilee, Thai Government (OHEC, MOST...)





Thank you for your attention

Save the dates

 <p>SCHOLARSHIP PROGRAM</p> <p>CALL FOR APPLICANTS 2019</p> <p>DEADLINE FOR APPLICATION: FEBRUARY 19, 2019</p> <p>For further information: www.campusfrance.org/thailand thailand@campusfrance.org Facebook: campusfrance/thailand</p> <p>CAMPUS FRANCE</p>	 <p>JUNIOR RESEARCH FELLOWSHIP PROGRAM</p> <p>CALL FOR APPLICANTS 2019</p> <p>DEADLINE FOR APPLICATION: OCTOBER 15, 2018</p> <p>FOR THAI POST DOCTORATES WHO INTEND TO SPEND 3 TO 6 MONTHS IN A LABORATORY IN FRANCE</p> <p>For further information: www.thaiembassyfrance.org/thailand/juniorresearchfellowship thaiemb@franceembassy.org</p> <p>FRANCE</p>	 <p>MOBILITY PROGRAM PHC-SIAM</p> <p>CALL FOR PROPOSAL 2020-2021</p> <p>DEADLINE FOR APPLICATION: MID-JULY 2019</p> <p>3-YEAR PROGRAM TO DEVELOP RESEARCH COLLABORATION BETWEEN THAILAND AND FRANCE</p> <p>For further information: www.campusthailand.org/siam www.hpc-siam.org/th</p> <p>FRANCE</p>
<p>February 2019</p>	<p>October 2018</p>	<p>July 2019</p>



Demonstration of Rice Monitoring using Sentinel-1 on VN-Datacube

Thierry Koleck ¹, Alexandre Bouvet ², Phan Thi Hoa ², Thuy Le Toan ²

¹ CNES, Toulouse, France

² CESBIO, Toulouse, France

Lam Dao Nguyen ³, Loc Thi Thuy Linh ³

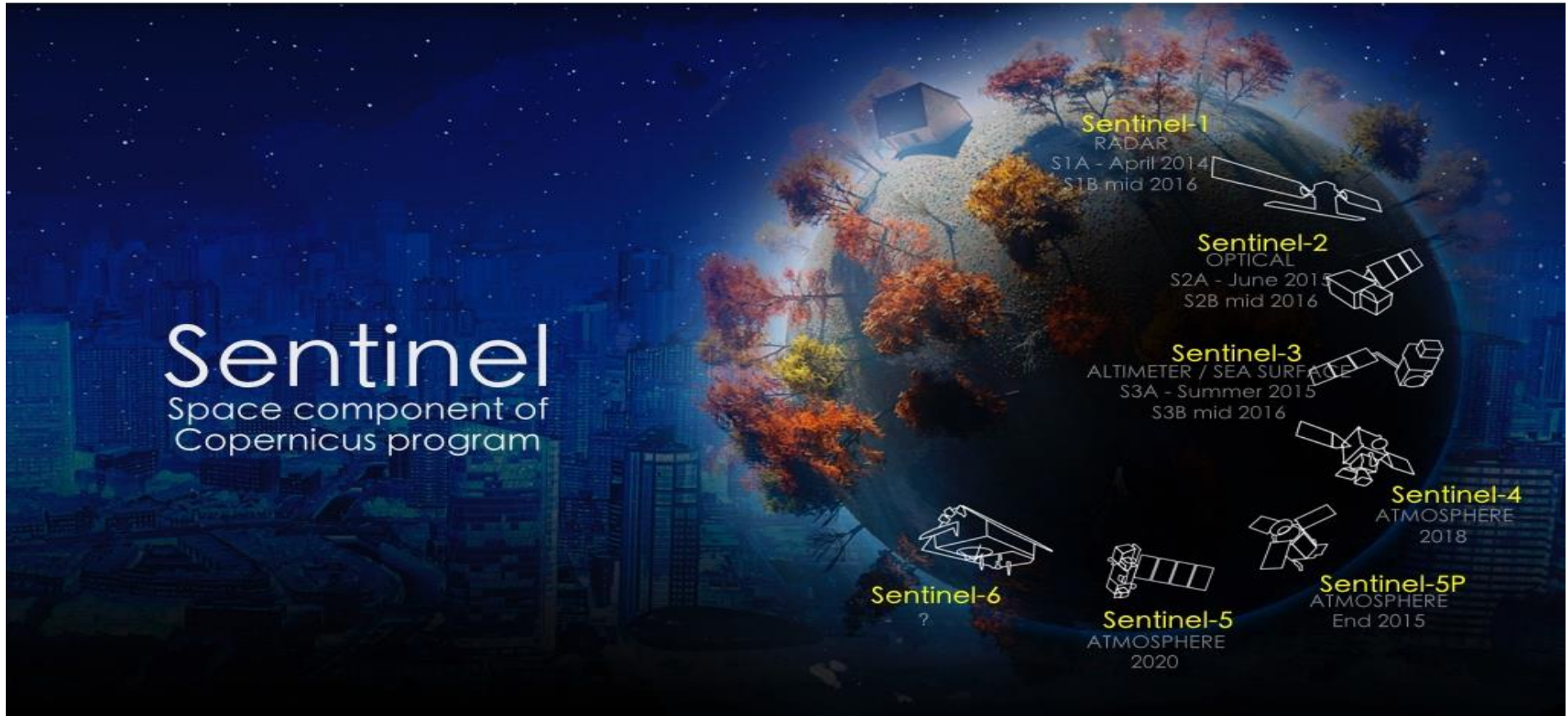
³ VNSC, Vietnam



Demonstration of Rice mapping with VN-Datacube



PEPS is the French Platform for Usage and distribution of Sentinel products : S1, S2 and S3



Characteristics of Sentinel

Family	Instrument	Unit	Revisit	From
 sentinel-1	C band SAR	A + B	6 days	September 2014
 SENTINEL 2	Multi Spectral Instrument	A + B	5 days	August 2015
 SENTINEL 3	OLCI SLSTR SRAL MWR	A +B	2 days	October 2016

The Archive



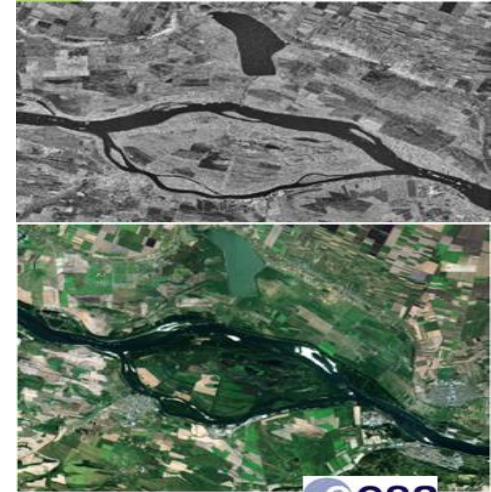
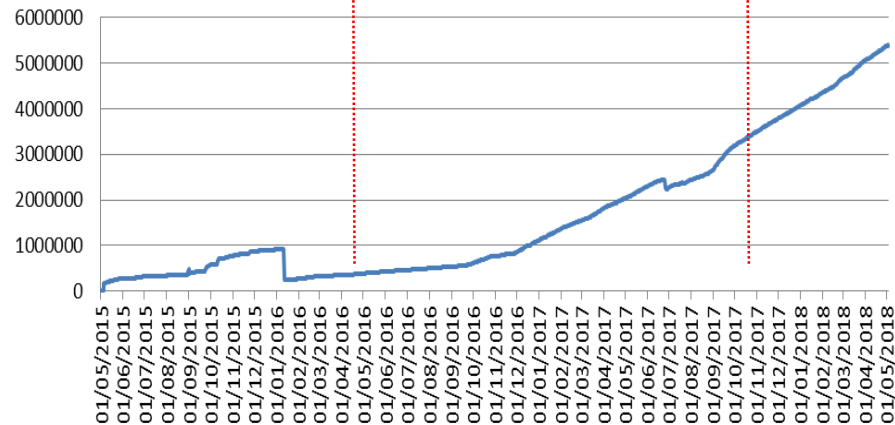
9 Million products : + 7 Petabytes

13 Terabytes / day

2015

2016

2017



esa
Danube S1 et S2



India S3

Catalog

- Search
- Visualize
- Download

<https://peps.cnes.fr>

Période d'acquisition

Début

Fin

Collection

Plateforme

Instrument

Niveau de traitement

Type de produit

Mode du capteur

Produit NRT

Sens de l'orbite

Numéro d'orbite absolue

Numéro d'orbite relative

RÉINITIALISER

RECHERCHER

3D

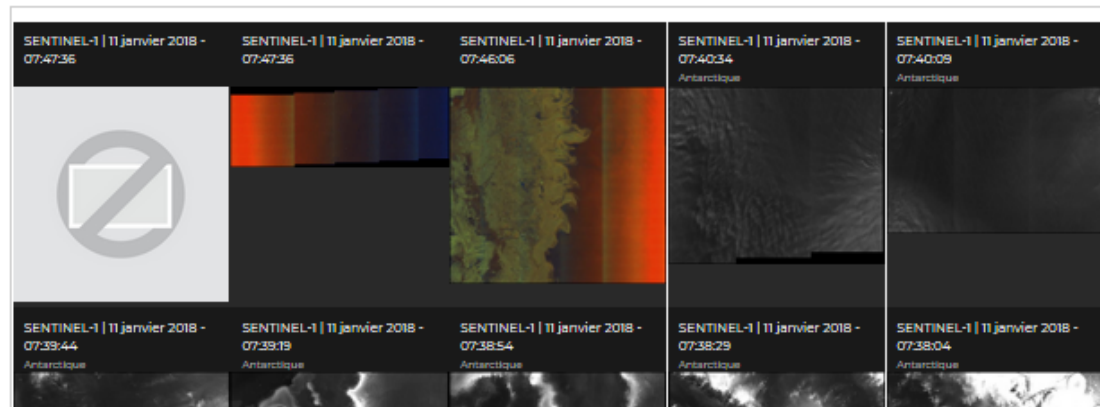
Voir plus de produits

DÉFINIR LA ZONE D'INTÉRÊT

EFFACER

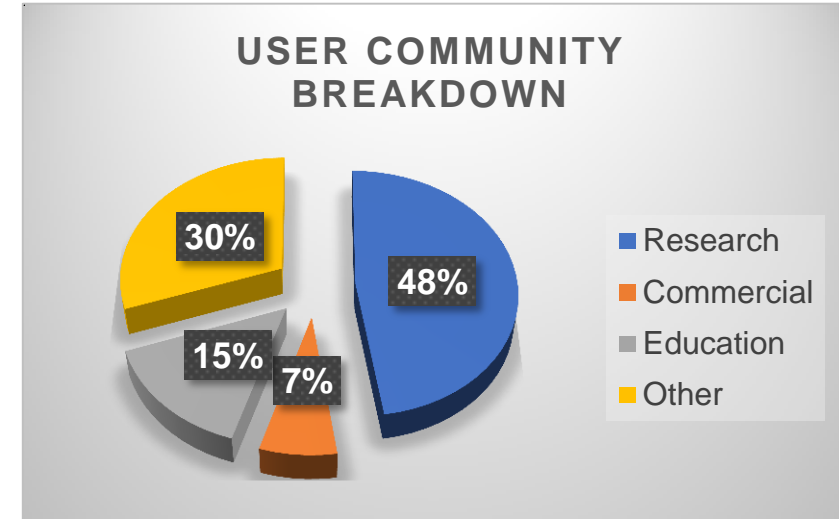
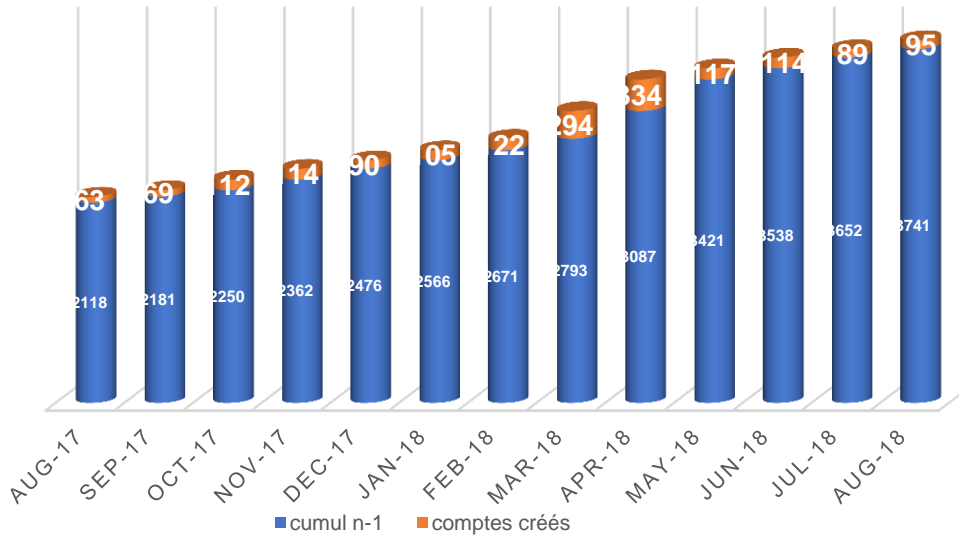
Environ 4137327 produits trouvés

Nombre de résultats : 50



Users statistics (around 200 users in Asia)

USER ACCOUNT EVOLUTION



PEPS Near Data Processing

- PEPS provide online processing facilities
- Applications are provided by CNES or by users
- This feature simplify the discovery and the use of the information in the spatial data

Sélectionner un traitement

Composition Fausses Couleurs IR (1)

Nom de votre traitement (facultatif)

TRAITER LES PRODUITS (1)

Composition Fausses Couleurs IR



Description :

Composition colorée 8 bits en pleine résolution (10 m) avec :

- infrarouge = B8 (842 nm - 10 m)
- "vert" = B4 (665 nm - 10 m)
- "bleu" = B3 (560 nm - 10 m)

Le résultat est tuilé et au format jpeg

Caractéristiques :

La durée moyenne d'exécution est de 2 minutes

Limitations :

Sans Objet

Sources :

Le traitement s'appuie sur l'OTB version 6.2 : [lien vers l'orfeo-toolbox](#)

Sélectionner les produits à traiter



SUPPRIMER TOUS LES PRODUITS

S2B_MSIL2A_20180314T104019_N0206_R008_T31UER_20180314T142720



Collection : SENTINEL-2 tuilés
Localisation : France
Date : 14 mars 2018 - 10:40:19

Plateforme : S2B
Instrument : MSI
Type de produit : S2MSI2Ap
Produit NRT : Non

Numéro d'orbite : S325
Niveau de traitement : LEVEL2A
Mode du capteur : INS-NOBS

Feel free to contact : Vincent.garcia@cnes.fr



PEPS support : exppeps@cnes.fr

A satellite image of Earth from space, showing a curved horizon and a view of the Earth's surface with various landmasses and oceans. The image is in a false-color representation, with land appearing in shades of green and brown, and oceans in deep blue. The background is a dark blue space filled with numerous small, distant stars.

Thanks for your attention

www.cnes.fr