

# CLS' services to support Maritime Domain Awareness

## Dedicated Software Solution integrating AIS – Satellite and RPAS data



Map menus:

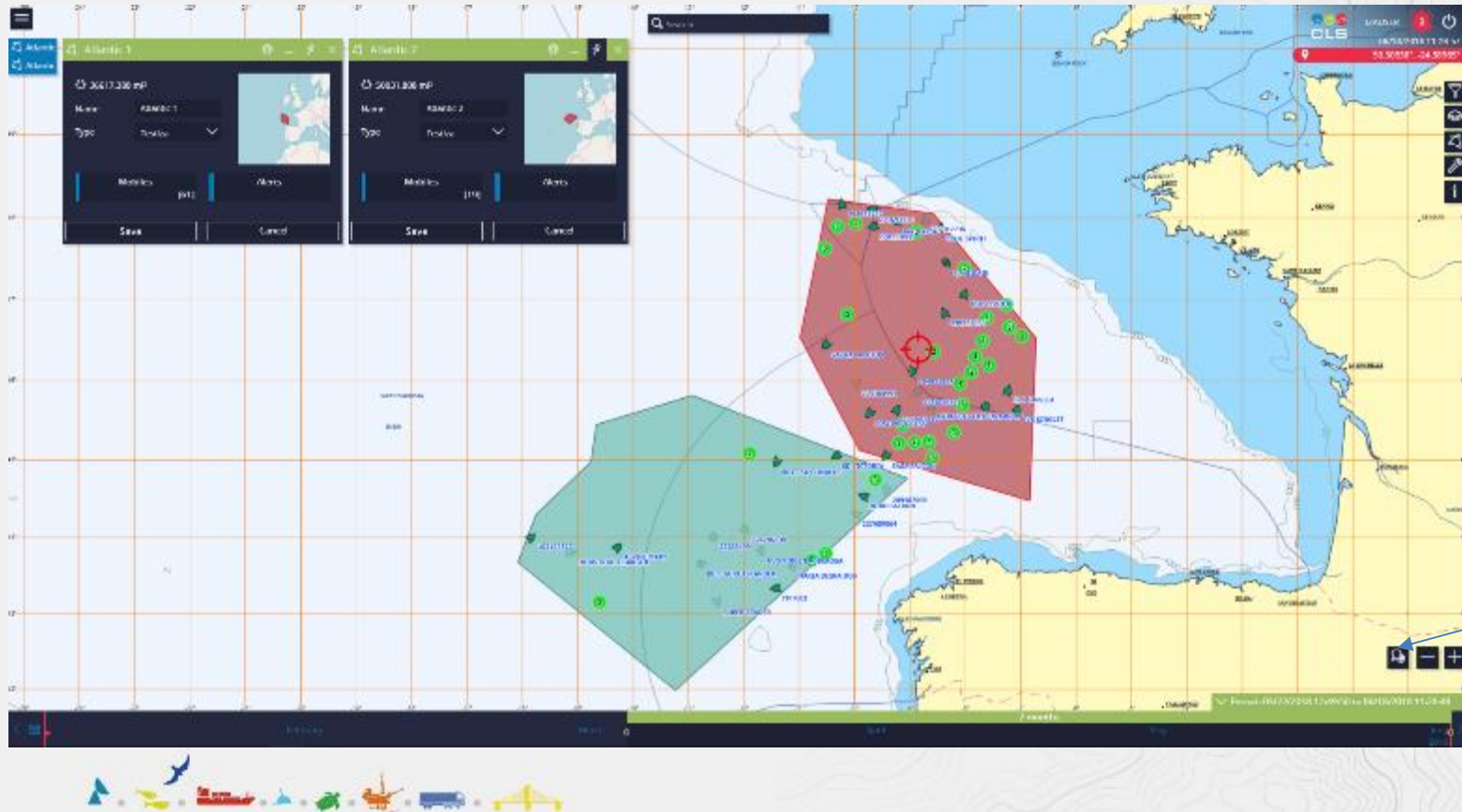
- Search
- Layer
- Area management
- tools

Area centric /  
ship centric

Search  
Timeline

# CLS' services to support Maritime Domain Awareness

## Dedicated Software Solution integrating AIS – Satellite and RPAS data



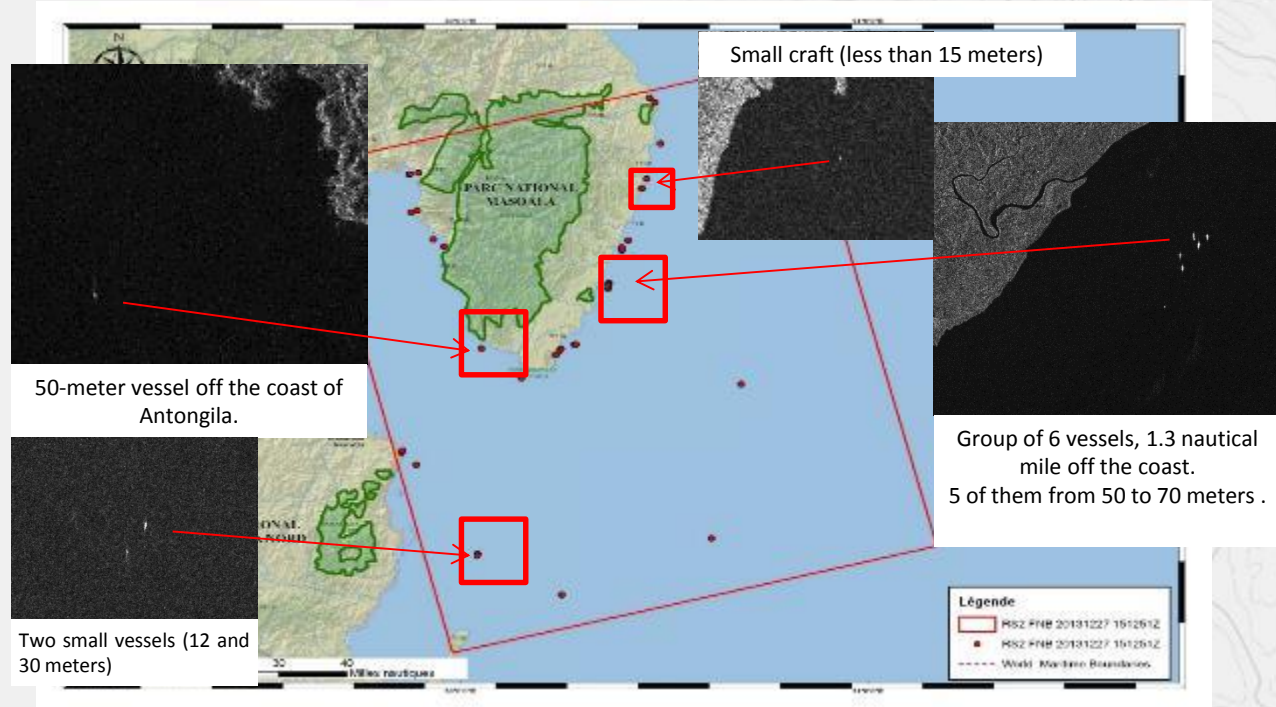
# CLS' services to support Maritime Domain Awareness

## Illegal traffic of Rosewood

# Identification of maritime traffic of rosewood from Madagascar

## Detect mooring areas near the national parks using satellite radar images

Radarsat-2  
Wide Fine  
150 x 150 km – 8-m resolution  
© MDA 2013



# CLS' services to support Maritime Domain Awareness IUU detection

**Objectives:** detecting illegal fishing boats of Patagonian tooth fish

**Context:** French Maritime Affairs + international collaboration  
with Australia

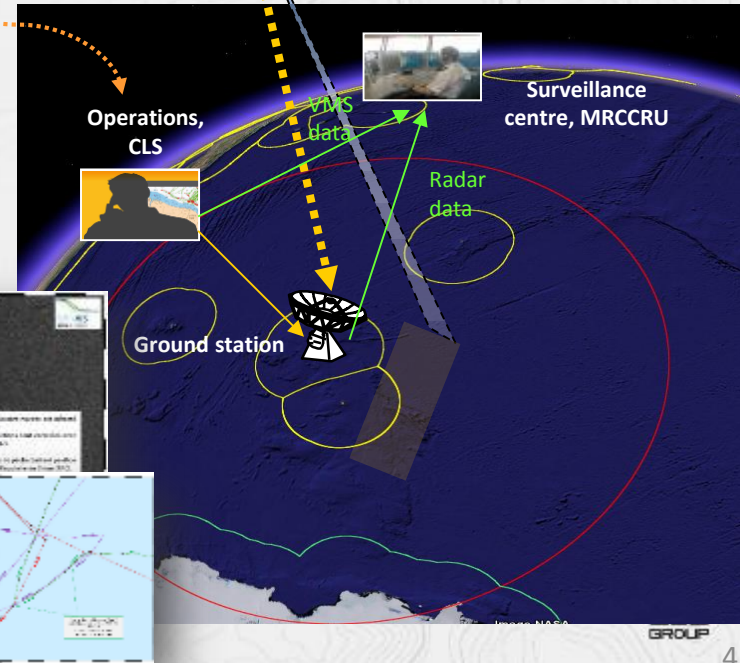
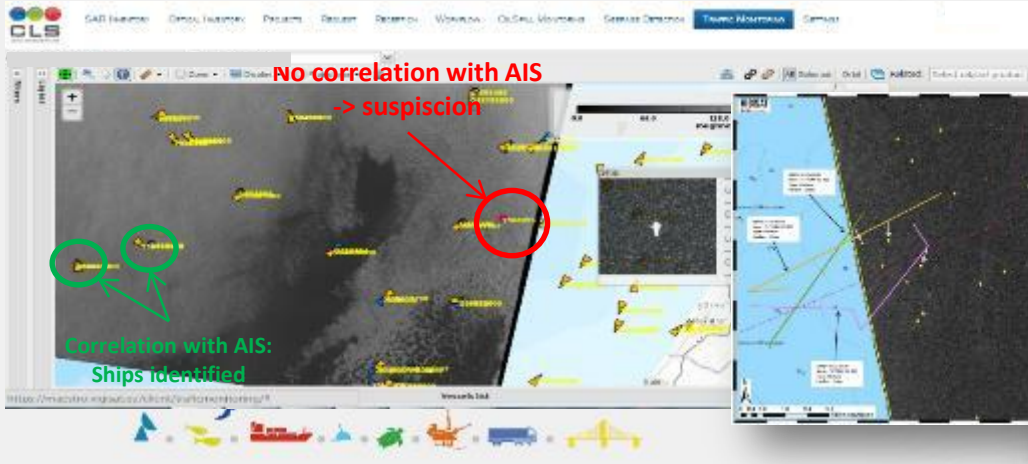
AIS/VMS tracks  
analysis

SAR + tracking  
systems  
surveillance

Final report/  
intervention

VMS: Argos  
(or Iridium)

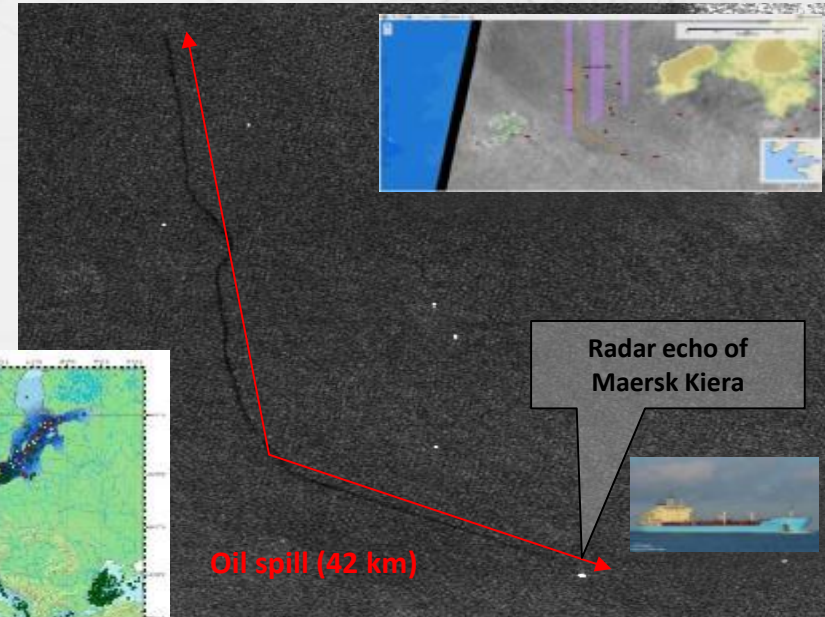
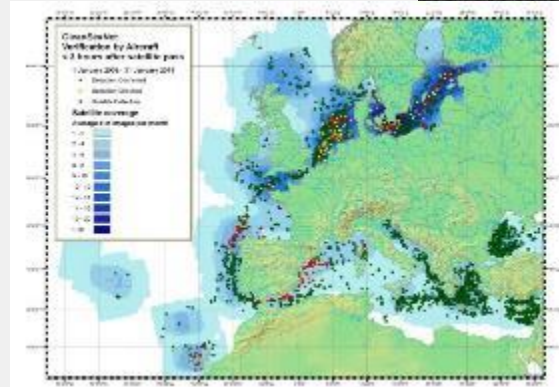
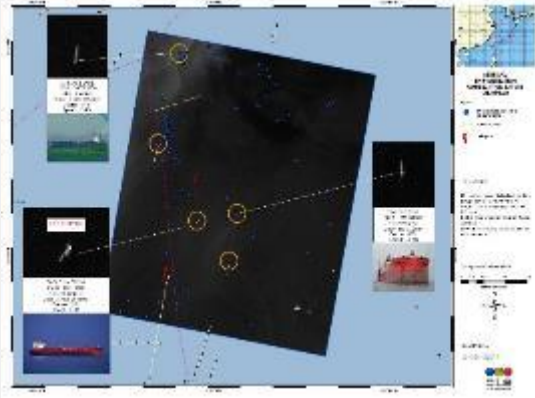
Radar  
Satellite



## CLS' services to support Maritime Domain Awareness

### Oil spill monitoring – Clean Sea Net/EMSA

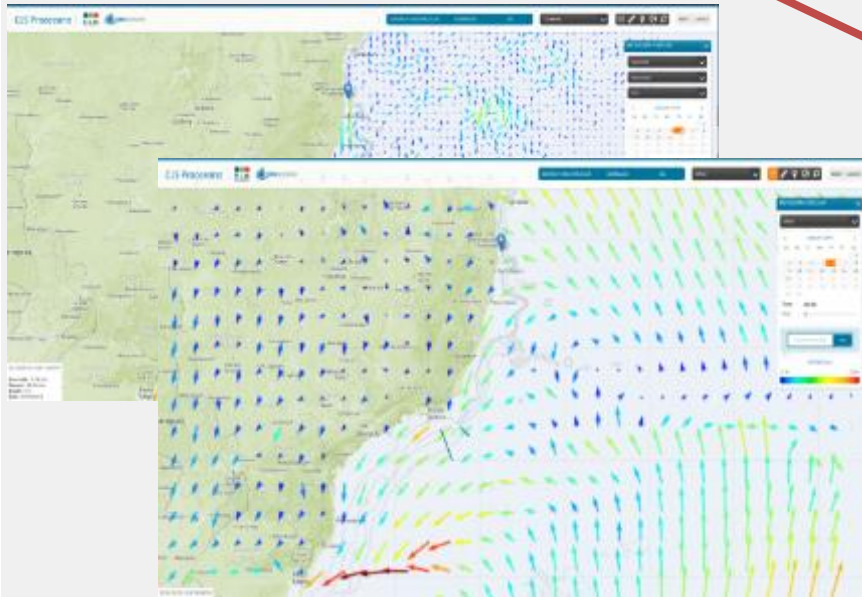
- **Services**: programming, acquisition, processing, analysis and interpretation of high-resolution satellite-based radar imagery
- **Objectives**: detecting, tracking and monitoring accidental or intentional oil slicks, (polluter-identification module)



# CLS' services to support Maritime Domain Awareness

## Drift modeling & SAR operations mgmt / AMSA for Sri Lanka – Maldives – Mauritius

### 1- Met-ocean datasets



### 2- Declare a SAR case

**PROSAR**

Current: MyOcean  
Winds: NCEP

Click on the map to select the area you want. If the box is not used, press it a "Wind Stop" button.

Name:

Latitude:  Longitude:

Start Time:  End Time:

Duration (h):  Uncertainty (diameter (nm)):

Initial diffusion coefficient (nm/s):

Component(s):

Number of tracks:

☒ Center of mass ☒ Particles

☒ Probability map ☒ 2 standard deviations

☒ Dispersion ☒ Simulation

**NEXT STEP**

### 3- Drift calculation



# CLS' services to support Maritime Domain Awareness

## Drift modeling & SAR operations mgmt / AMSA for Sri Lanka – Maldives – Mauritius

### 4 - Search and Rescue Unit + Search Recommendations

